

# Dr. Gary Chastagner

ENDOWED CHAIR IN PLANT PATHOLOGY

---



WASHINGTON STATE  
UNIVERSITY



“Many people will actually give Gary direct credit for the continuing success of what we do.”

## BULBS + CUT FLOWER PRODUCTION

Gary is one of the leading researchers in the world on diseases in bulb crops. He is located in the heart of the growing area, which is also very important. [...] Gary’s ability to combine research dollars, facilities at WSU Puyallup, and resources of land, greenhouses, and stock, from the surrounding growers, has enabled him to be one of the most effective researchers the bulb and cut flower industry has ever worked with. Many people will actually give Gary direct credit for the continuing success of what we do.

**LEO ROOZEN**  
President, Washington Bulb Company

In agriculture, the management of environmental issues is constantly changing and evolving. Gary’s successors at WSU will be working together with our industry in perpetuity as a result of the endowment, allowing for constructive change and progress that benefit growers, retailers, industry partners, consumers, and the environment. Christmas trees are big business for the Pacific Northwest. Members of our industry successfully grow and sell quality products as a result of research conducted by Gary and his cohorts. The endowment allows for our industry’s continued partnership with scientists to produce the best product for consumers, which in turn contributes to the economic and environmental success of both Washington state and Oregon.

**KRISTI SCHOLZ-O’LEARY**  
Past President, Pacific Northwest Christmas Tree Association



“Dr. Chastagner’s work will forever be a gift...”

## CHRISTMAS TREE GENETICS + PRODUCTION + KEEPABILITY

As new strains of Christmas Trees are developed using these principles, the consumer market will be affected in a positive manner. Dr. Chastagner’s work will forever be a gift to current and future Christmas Tree Farmers and Breeders.

**JAMES ROCKIS**  
Quarter Pine Tree Farm

As I became more knowledgeable about the real tree industry, I discovered that Gary had touched many different areas of research and discovery pertaining to our industry—ranging from tree keepability to genetic mapping. His research on fire retardants has helped to steer the fire code writers away from a path that would have had little effect on holiday safety and would have been very detrimental to the real tree industry. The science behind his work was irrefutable.

**RICHARD MOORE**  
Emeritus Professor, Cornell University





# ORNAMENTAL + LANDSCAPE HORTICULTURE

The endowment is an investment in the future of horticulture because it ensures a legacy of scientific, locally relevant research that will serve the ornamental horticulture industry in perpetuity. Our evolving climate continues to put pressure on plants and green spaces. The endowment will improve plants' chances for survival when they are faced with unfavorable environmental conditions and parasitic microorganisms that cause disease.

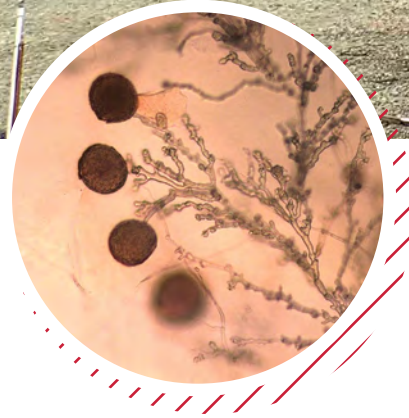
## BREANNE CHAVEZ

Executive Director, Washington State Nursery & Landscape Association

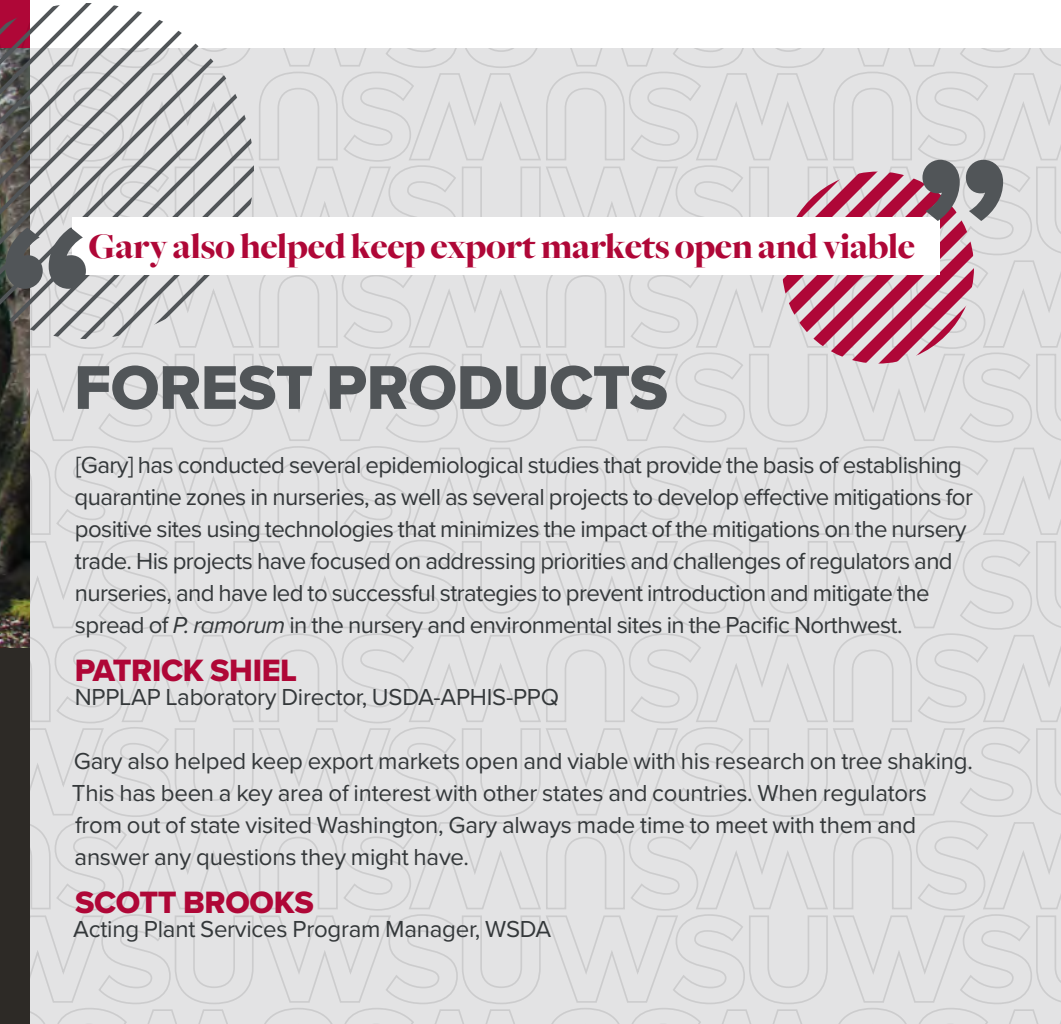


Dr. Chastagner's work is as varied as the ornamental horticulture industry:

- He studies the life cycles of pathogens and how to optimize disease management programs, reducing pesticide applications.
- He has helped identify new environmentally friendly tools to manage diseases and used DNA molecular tools to identify and track the spread of invasive pathogens.
- He searches for plant species with resistance to diseases like *Phytophthora* root rot.
- He used steaming to eradicate regulated pests and pathogens that cause sudden oak death when they are detected in Washington nurseries and landscapes.



Dr. Chastagner's research has led to effective methods to **identify and trace** specific strains of regulated pathogens—and tools to help **mitigate outbreaks** when pathogens and pests are detected.



**“ Gary also helped keep export markets open and viable ”**

## FOREST PRODUCTS

[Gary] has conducted several epidemiological studies that provide the basis of establishing quarantine zones in nurseries, as well as several projects to develop effective mitigations for positive sites using technologies that minimizes the impact of the mitigations on the nursery trade. His projects have focused on addressing priorities and challenges of regulators and nurseries, and have led to successful strategies to prevent introduction and mitigate the spread of *P. ramorum* in the nursery and environmental sites in the Pacific Northwest.

### PATRICK SHIEL

NPPLAP Laboratory Director, USDA-APHIS-PPQ

Gary also helped keep export markets open and viable with his research on tree shaking. This has been a key area of interest with other states and countries. When regulators from out of state visited Washington, Gary always made time to meet with them and answer any questions they might have.

### SCOTT BROOKS

Acting Plant Services Program Manager, WSDA

WASHINGTON STATE DEPARTMENT OF COMMERCE

Washington accounts for 25% of U.S. log and lumber product exports...



**Dr. Gary Chastagner**  
Plant Pathologist  
Washington State University

- Guarantee funding for research relevant to industry concerns.
- Safeguard research infrastructure capacity in perpetuity.
- Gain industry representation on Selection and Advisory Committees for the Endowed Chair.
- Gifts are tax deductible (contact your tax advisor for specific guidance.)

Join Christmas tree, nursery, landscape, and ornamentals professionals in celebrating Dr. Gary Chastagner's nearly 50 years of contributions to their industries—and beyond—by creating the **Dr. Gary Chastagner Endowed Chair.**

### **INVEST IN YOUR FUTURE**

Consider a donation to ensure locally relevant research continues to develop solutions and innovations to meet your future challenges.



**WASHINGTON STATE**  
UNIVERSITY

# Give today!

[go.wsu.edu/ChastagnerEndowedChair](https://go.wsu.edu/ChastagnerEndowedChair)

